

P51 (7 mod 4, grade 3)

			2		4	
2		4				
		3				2
	2		1		3	
			3			4

P54 (7 mod 4, grade 10)

		4				
				4		

P52 (7 mod 4, grade 3)

			2			4
	3					
1		3	4			
						2
	4				1	
			1	4		

P55 (7 mod 4, grade 10)

			4			
1						

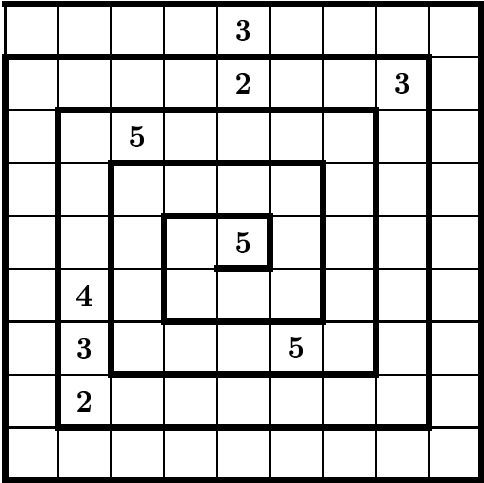
P53 (7 mod 4, grade 6)

			1			
			4			
	3					
	1				2	
		2		1		

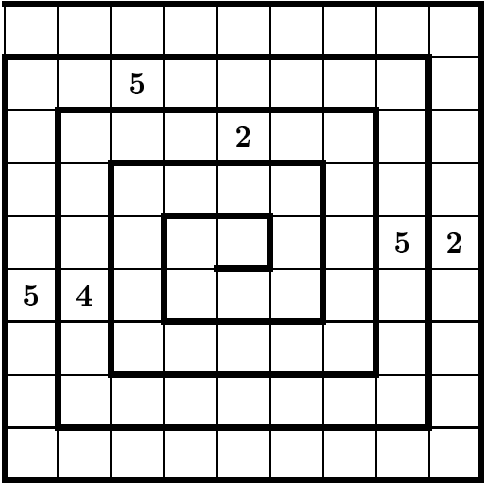
P56 (7 mod 4, grade 10)

			2			
		1		3		

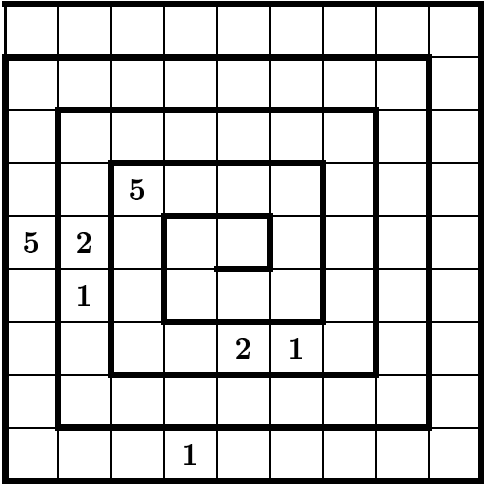
P69 (9 mod 5, grade 8)



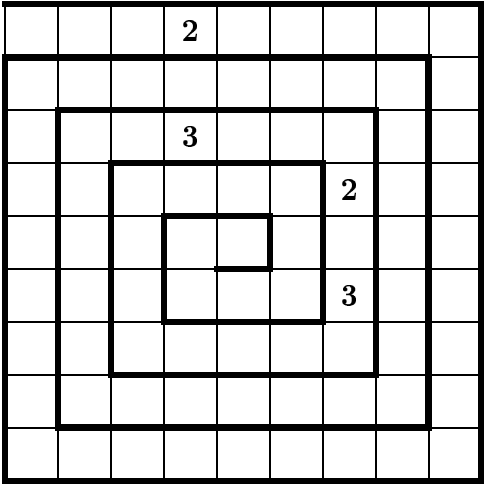
P72 (9 mod 5, grade 9)



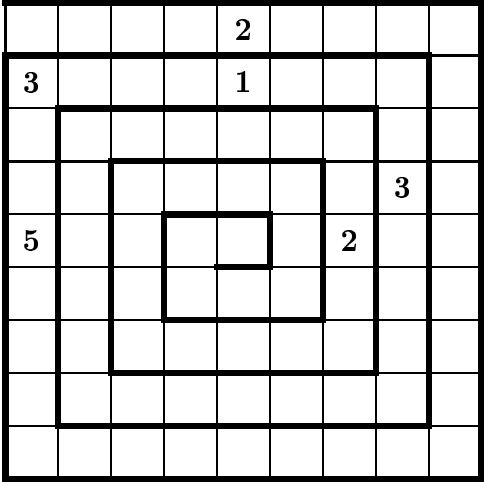
P70 (9 mod 5, grade 8)



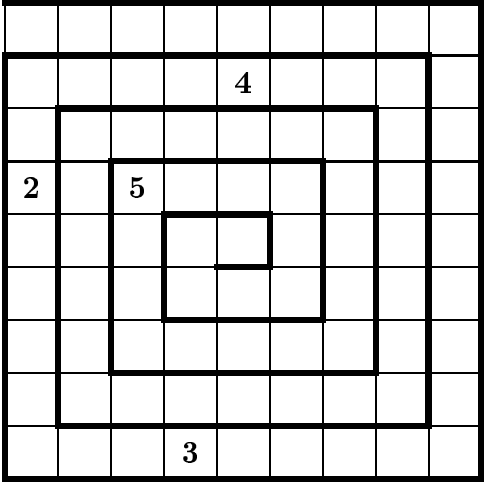
P73 (9 mod 5, grade 10)



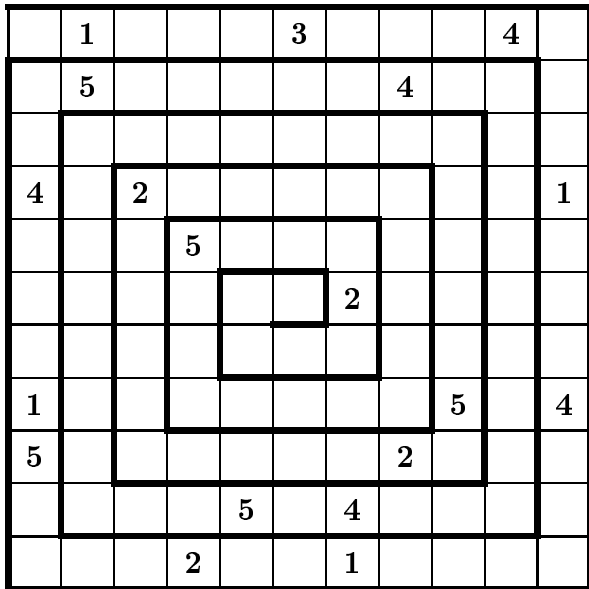
P71 (9 mod 5, grade 9)



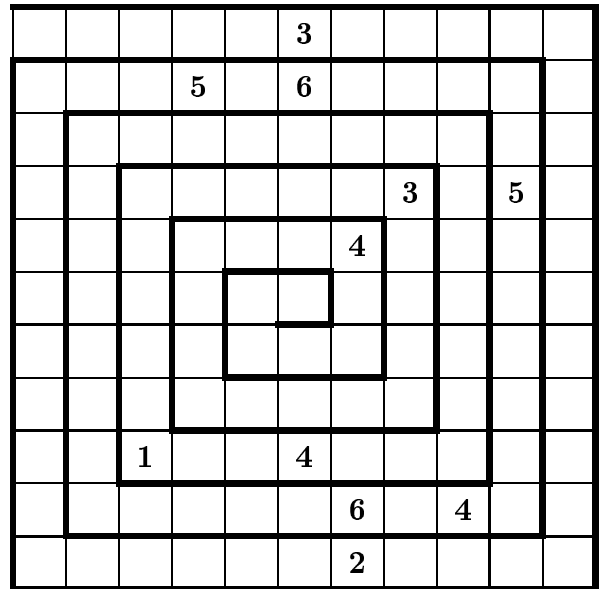
P74 (9 mod 5, grade 10)



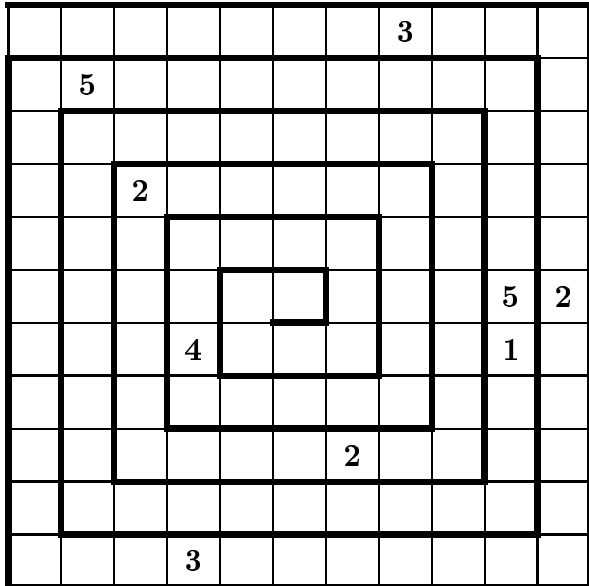
P81 (11 mod 5, grade 5)



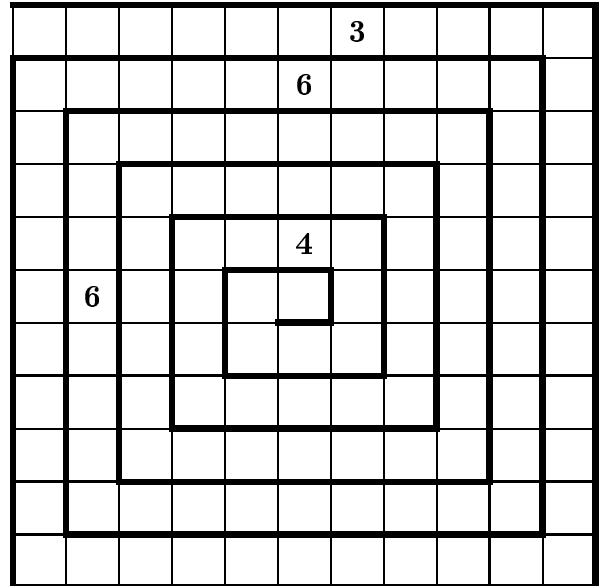
P84 (11 mod 6, grade 8)



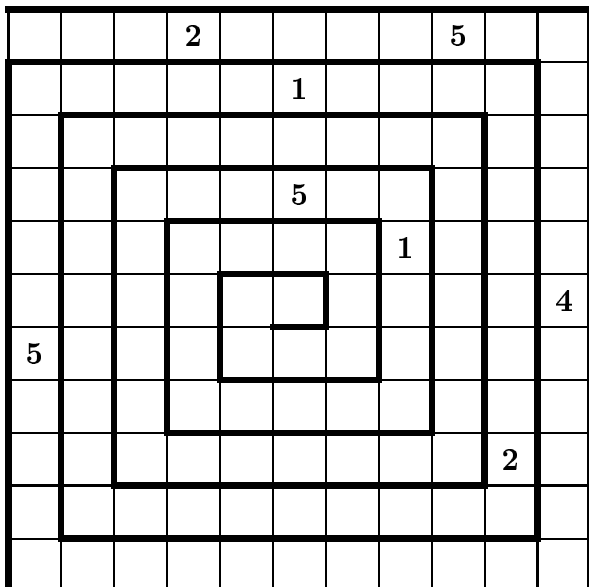
P82 (11 mod 5, grade 9)



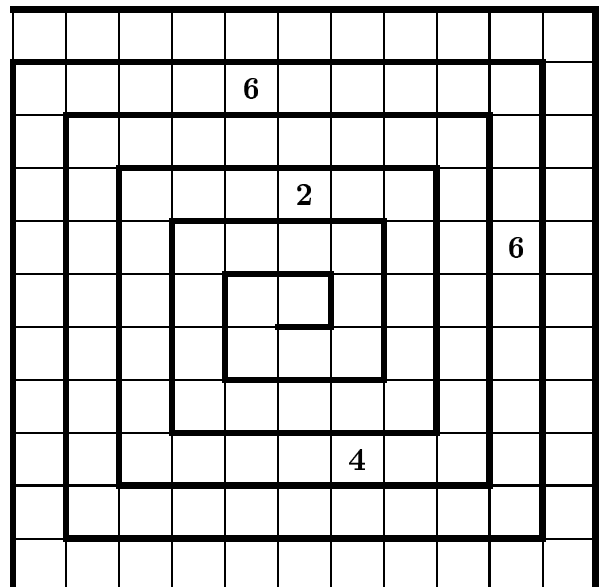
P85 (11 mod 6, grade 10)



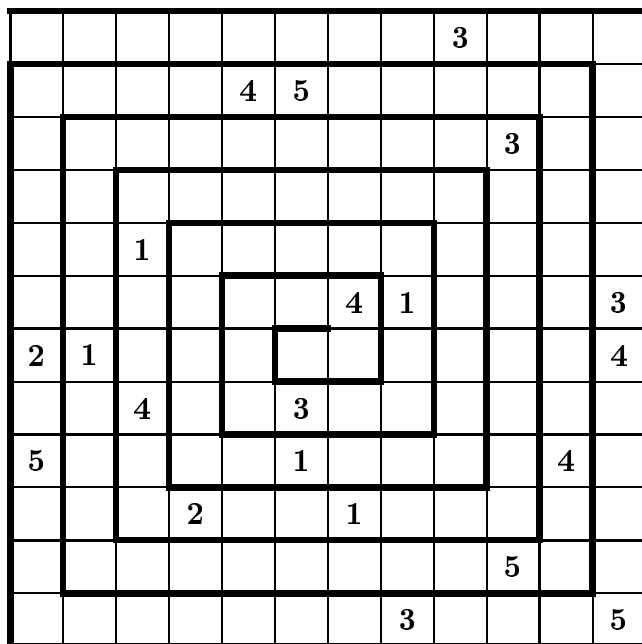
P83 (11 mod 5, grade 10)



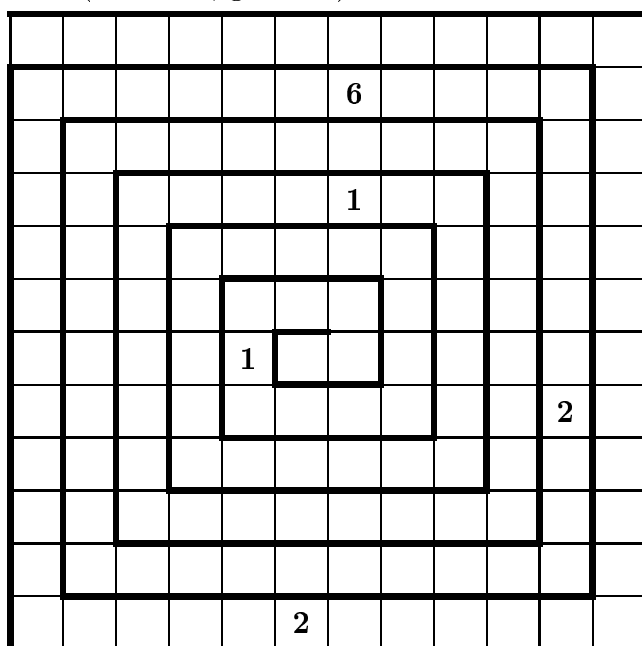
P86 (11 mod 6, grade 10)



P87 (12 mod 5, grade 5)



P88 (12 mod 6, grade 10)



P89 (13 mod 5, grade 5)

							5						
4								5	1				
3	5			1	2								
2		5											
						1			2				
						2			3		5		
								3			1		
					5								
			1						5				
	2												
											1		
			5			3							
				3			2						5

P90 (14 mod 5, grade 5)

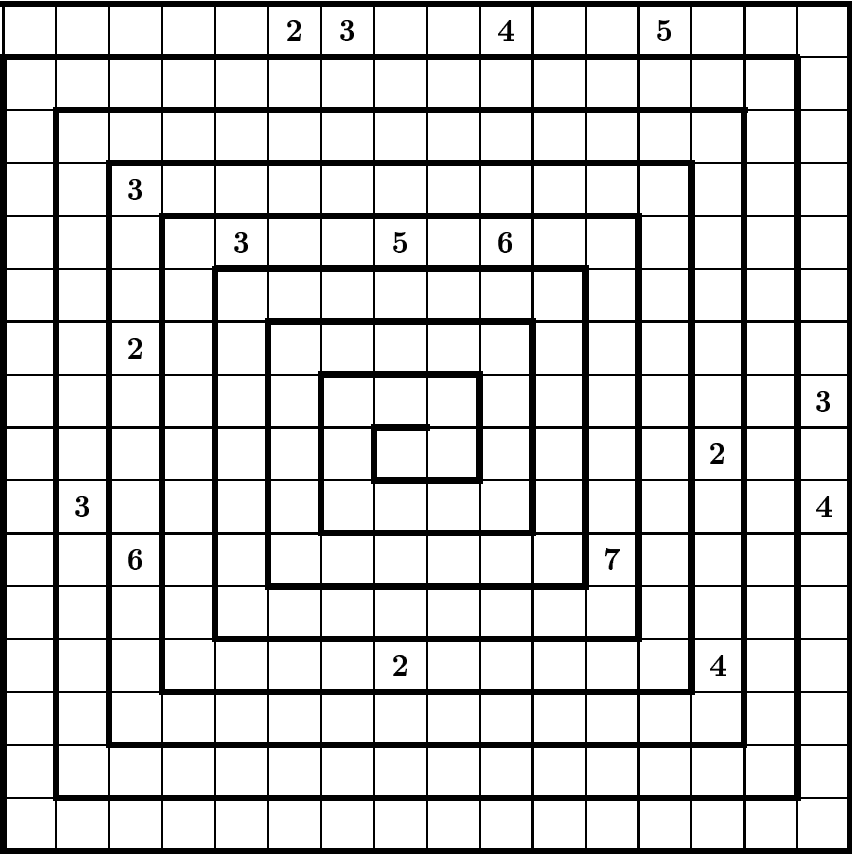
							5						
4				1									
				4	5		1						
									2				
								2		3			
							2				5	1	
		2					3						
		1											
									3	4	2		
			3		1					5		2	
					2								
						2							
			5			4							
	4		2							1			

	1		2				5										
				5											3		
	5						2	3					4				
		3		4					2								
		2	1												4		
			5				3					1				2	
							2	5			4					4	
									1								
												3					
2												4	1				
				4												5	
					2	1											
	2																
								4									

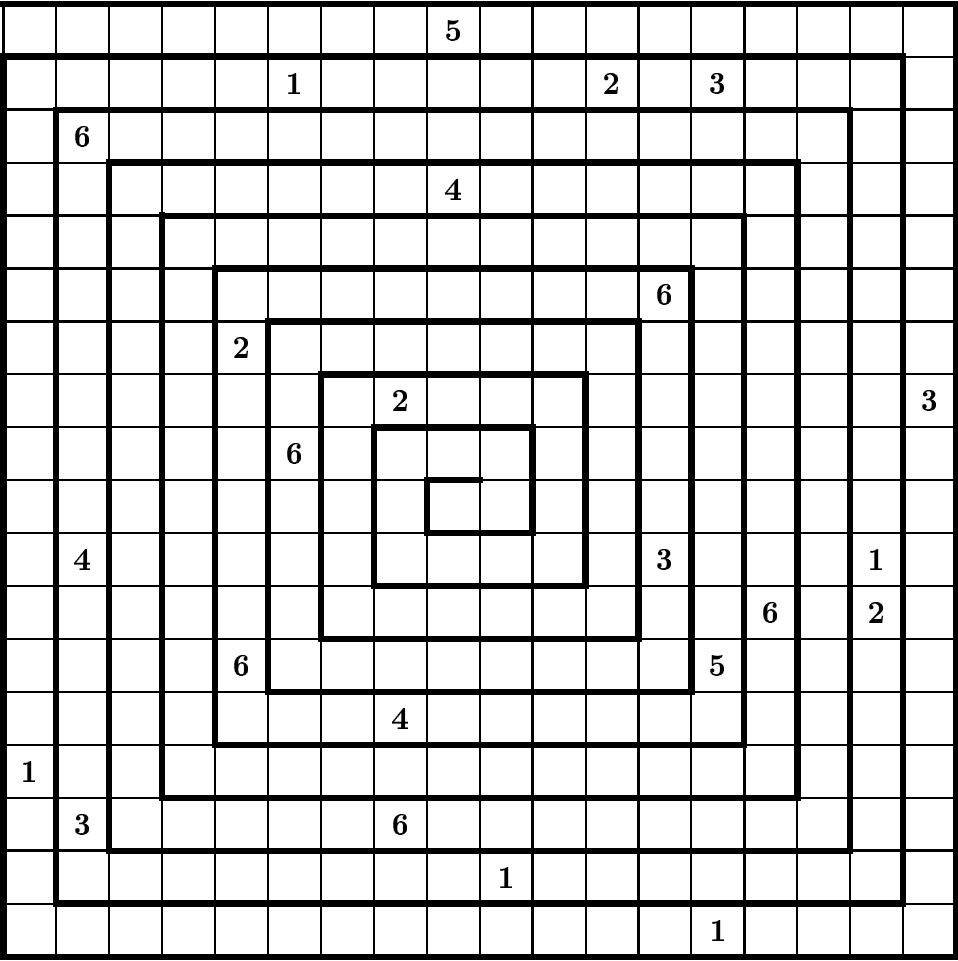
A 10x10 grid with concentric squares. The numbers are placed in the following cells (row, column):

- Row 1: (1, 9) = 6
- Row 2: (2, 3) = 1, (2, 6) = 2, (2, 7) = 3
- Row 3: (3, 1) = 4, (3, 5) = 5
- Row 4: (4, 6) = 3
- Row 5: (5, 3) = 5
- Row 6: (6, 1) = 2, (6, 9) = 5
- Row 7: (7, 4) = 5, (7, 5) = 6, (7, 6) = 3
- Row 8: (8, 7) = 4, (8, 9) = 3
- Row 9: (9, 7) = 1
- Row 10: (10, 5) = 4

P93 (16 mod 7, grade 10)



P94 (18 mod 6, grade 10)



P95 (18 mod 7, grade 10)

